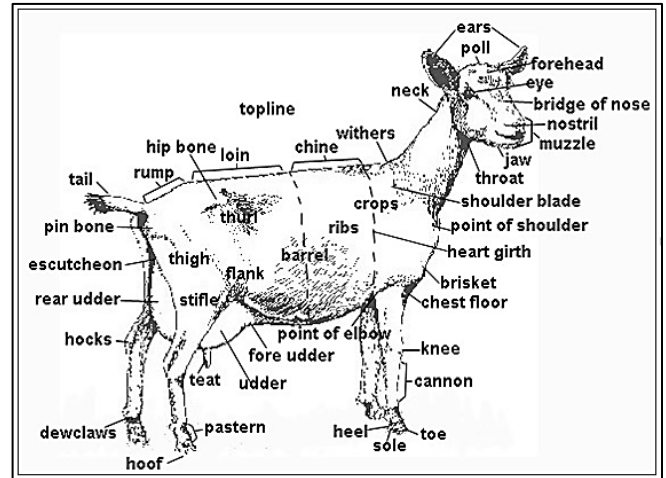


Show Rules adopted in 2008 by the
MINIATURE GOAT BREEDERS ASSOCIATION OF AUSTRALIA INC.
SHOW RULES

Published by the Australian Miniature Goat Registry 2000
Current as of November 2018

17. The standard of excellence of the MGBA Show Goat, is beauty, symmetry and balance, possessing the conformation characteristics desirable of the breeds. Femininity in the Does, and boldness and masculinity in the Bucks, at the same time, displaying an impeccable temperament. The general impression should be one of refinement, symmetry, agility and an alert intelligence. The Miniature Goat is a creature of very high intelligence, curiosity, alertness and friendliness. Since the Breed objective is a small perfectly balanced animal, preference in judging shall be given to the smaller animal for its age when all other characteristics are equal. (see Breed Standards)



18: Showing

Preamble;

The objectives of the MGBA Association are:

- To create a favorable public image of the Australian Miniature goat and the Miniature Goat Breeders Association of Australia Inc;
- To advance the interests of the Association at all times and maintain its integrity including following the highest standard of stud management, business practice and fair and proper competition;
- To promote the use of good sound judgment, ethical behaviour and professional conduct at all times;
- To record and maintain accurate details of animals listed in a miniature goat registry including the provision of transfer / service details for animal(s) upon completion of sale [230115];
- To promote and support the development of the miniature goat breed;
- To bring together people interested in the miniature goat breeds;
- To collect, publish and share relevant information;
- To encourage and maintain high standards of breeding, consistent with adopted height and breed standards;
- To promote appropriate housing, handling, health, welfare, management and selling of animals;
- To comply with the Rules and Regulations relating to the keeping of goats as required by local and state authority and Miniature Goat Breeders Association.
- To encourage participation in events that promote development of the miniature breeds [211207]
- To maintain a high standard of ethical conduct comprised of honesty, integrity and fair dealing between members, between members and the association and between members and non-members, essential to the success of the association [240611].

Exhibition of the miniature goat breeds is a key aspect in MGBA breed promotion. It unites Exhibitors and spectators alike, encourages high standards of breeding in an effort to perfect animal conformation, and encourages high standards of ethical and professional conduct amongst Members/Exhibitors/Judges/Stewards and others interested in the miniature goat breeds. The following show by-laws apply.

18.1. Eligibility for Showing

- It is a condition of entry that all persons participating in any event understand, accept and adhere to rules and regulations of the MGBA including bylaws, ethics and attachment(s) and any amendment hereunto.

(a) Membership

(i) Membership must be current to participate in MGBA shows and events.

(b) Registration

MGBA registered Australian Miniature / Australian Nuwby / Nigerian Dwarf / Pygmy Goats and their derivatives must hold current and up to date registration (*except as in iii below*).

(i) A copy of registration certificate must be available for viewing on the day with show entry form, movement advice and health documents upon request to be eligible to participate.

[Note: Show Managers have no access to check registration authenticity from other groups.]

(ii) A registered animal may be shown under a lessee's ownership provided an official lease is registered with the MGBA. For points to count with respect to any competition, such agreement & fees must be received by the MGBA before the day of such competition. The lessee becomes the legal owner of the animal for the period of the lease & the animal must be entered in ownership of the lessee.

(iii) Pygmy and Nigerian Dwarf Goats and their Derivatives up to six months of age are permitted to be shown at MGBA shows while waiting for the confirmation of their DNA prior to their registration applications being submitted.

To be eligible a copy of the registration certificate of the Parent(s) must be emailed/posted in with entries AND must be available for viewing upon request, on the day of the show. Where an animal's DNA results do not confirm the breed/pedigree or the animal's registration is not processed / completed the animal will be disqualified and all wins, award, points, entry fees and other such costs will be permanently forfeited and show results will be amended with the removal of the ineligible entry. Bucks, Does and Wethers require DNA parent verification to be shown.

(c) Height requirements

All Animals will be measured in prior to the commencement of judging and catalogue signed by Show Steward. Animals are to be brought up to the measuring station /area as directed by the measuring Officer/ steward.

Height Measurement is to be taken at the highest point of the wither to the ground with the animal standing squarely on all four feet with all legs in a vertical line to the ground & head in relaxed upright position. Hooves should be neatly trimmed. **Measurement Device** for show purposes is a fixed two footed bar that is placed over the wither of the animal while standing correctly on a solid surface. Both feet must be on the ground and no pressure applied to hold the device down on to the wither for the animal to be deemed to have measured-in. The measuring device must be measured for correctness by a Foundation Member, MGBA Committee Member or Committee appointed Official prior to show use. **Measurement Surface** will be a flat level surface, concrete, wood, solid level ground and all animals are to be measured on the same surface to ensure all exhibits are measured under the same conditions. Animals will be permitted two measurement attempts only to ensure a timely measuring-in period and avoid classes running late. The Measuring Officer/Stewards reading is final - no further measurements will be allowed.

The **Measuring Officer/ Steward** is the person appointed by the MGBA Committee or Show Official for the day of the show. The Measuring Officer will not measure their own animals. Another member must measure the Measuring Officer's animals and sign with name printed indicating such, for exhibits to be eligible for showing.

(i) The following height restrictions have been set for the purpose of showing:

ALL SHOWS

AUSTRALIAN MINIATURE / PYGMY / NIGERIAN DWARF GOATS

AGE CLASSES:

Does not to exceed 57cm

Bucks / Wethers not to exceed 60cm

FOUNDATION CLASSES

Does over 57cm & not to exceed 60cm

Bucks/wethers over 60cm, not to exceed 63.5cm

AUSTRALIAN NUWBY GOATS

AGE CLASSES:

Does not to exceed 60cm

Bucks/wethers not to exceed 63.5cm

FOUNDATION NUWBY CLASSES

Does over 60cm – 63.5cm

Bucks/Wethers over 63.5cm under 66cm

(ii) Any animal deemed to exceed the maximum height as listed cannot be shown in classes unless otherwise indicated in MGBA approved schedule.

(d) Permanent Identification

Permanent Identification will need to be easily identified and correspond to what is listed on the Registration Certificate. Animals must have NLIS ear tag in place unless a state ear tag exemption for show animals in place. Identification must be confirmed prior to commencement of judging. Exhibitors are responsible for ensuring animal ID corresponds to registration, and where microchip is used exclusively, must have access to a scanner.

(e) Entire Males

Entire males must have all the fully developed physical characteristics of a breeding male and must be masculine in appearance. Entire Males exceeding 12 months must be under the control of a competent handler [16yrs+] at all times or tethered in trailer or pen. This rule applies to ALL SECTIONS, NO EXCEPTIONS. It is the buck owner's responsibility to ensure that all possible safety precautions are taken. The MGBA recommends the use of halters on adult bucks.

(f) Animal health & bio-security

(i) Animals must be serviceably sound, in good condition and well groomed. Transmissible weakness and unsoundness to be counted against in Breed classes.

(ii) Milk must be suitably caught, contained and removed from grounds and procedures on animals are not permitted at shows or other MGBA events.

(iii) Separation to prevent movement of faeces or contaminated food, water or bedding. Adequate supervision of animals at the venue. Restrict animals to designated area by tethering or penning when not being led. Prompt

removal of fecal material - regularly removed to no access plastic lined bins. This is particularly important in laneways and judging areas. Equipment must be cleaned regularly and stored at or in bin. (Each stud responsible to clean up after themselves)

(iv) Sick goats not permitted on grounds. (10/7/2015)

(v) Animals must not be subject to unsupervised handling or access by the general public.

(vi) All animals over 12 months must have tested ⁽¹⁾ clear for CAE and Johne's Disease in the past 12 months. Excluding testing for Johnes in WA (Johnes free status State)

• All animals under 12 months that are not tested require test results from both tested parents. • Copies of the test results are to be attached to the relevant signed Goat Health Statement.

• Signing of your entry form indicates that you and any person participating with you, declare that your animal/s meet the JD/CAE negative tested requirements and declare that they have not been in contact with or in the proximity ⁽²⁾ of untested animals, ⁽³⁾ nor in contact with the uncleaned and non-disinfected facilities, vehicles or equipment used by any non-accredited herds or untested animals. Any milk used to feed kids must come from accredited herds or be pasteurized or spray dried ⁽⁴⁾.

⁽¹⁾negative test to JD/CAE within 12mths (or kids up to 12 months -require parent test results). A copy of laboratory test results with animal's names/tags or if not available, a copy of the laboratory test results with a letter from the veterinary surgeon who collected the samples with the goat's names/tags/identification methods to be provided to the Stewards on request. Any laboratory test result that shows a positive or inconclusive result must be further investigated by a veterinary surgeon and this positive/inconclusive report must have attached to it the final report of such investigation e.g. a negative fecal test for JD or subsequent negative blood test for CAE.

⁽²⁾ exhibits are not permitted to make contact with untested/non-accredited animals-unloading/loading; walkways; pens; yards; feed/water receptacles; equipment; transport; show ring; etc at any time, or testing is void. Contact is defined as being within 2m unless separated by a solid barrier.

⁽³⁾animals: goats; sheep; deer; cattle; camel; bison; llama; alpaca

⁽⁴⁾goats that have been in contact with animals⁽³⁾, their manure or unpasteurised goat's milk from non-accredited sources must be held in isolation and be blood tested twice at an interval of 6-12 months. (3/4/2018)

For clarity any exhibitors attending non MGBA shows where untested animals are allowed to enter will be classed as having been in contact with untested animals.

Animals from accredited herds will still be required to meet the MGBA CAE/Johne's testing as per point (vi) above and the exhibitor is solely responsible to ensure they meet any requirements of their accreditation scheme when attending MGBA shows or events.

(g) MGBA photography

(i) It is a condition of entry that Best of Breed and Best in Show (2/11/16) exhibits, stand to be photographed when directed, prior to the end of the show for recording and promotion of show results. Failure to do so will result in disqualification of exhibit, award/s being permanently removed and forfeiture of entry fees.

(ii) Photos and results of classes / animals will be published as the Show Society / MGBA require. Exhibitors and Show Managers are required to advise of correction to errors that may occur in the awarding / recording of show results so corrections can be made. All photos taken by the MGBA remain the property of the MGBA and copyright rules apply.

(iii) Persons other than official MGBA photography Steward must not interfere with the timely photography process; must not get between MGBA appointed photographer and subject being photographed; must not remain in photography area unless directed to do so or cause delay in the running of the show.

(iv) Exhibitors must follow the direction of the photography Steward and are responsible for appropriate handling of exhibit to ensure photographs show the animal in accordance with the Standard of Excellence. Site of photographs will be at the discretion of the photography Steward/show officials.

18.2. GENERAL

(a) Entry forms must be filled in completely, signed by Exhibitor and be accompanied by the correct fees.

(b) Rules set for each show will be implemented along with the Rules as set herein. MGBA Show Rules apply. MGBA Inc Breed Standards, Heights and regulations will govern breed related issues IN ALL CASES.

(c) Every Exhibitor or his agents must provide all information required on the competition entry form, and are responsible for their own errors and those of their agents in the filling out of such forms.

(d) Exhibitors will be responsible for checking their entries against the show catalogue and ensuring that any errors, omissions and alterations are penciled in by the Steward prior to judging.

(e) It is a condition of entry/participation that animals of percentage breeding must have percentage clearly listed on results eg: Champion 25% Pygmy.

(f) Strictly no smoking in the show ring or animal penning area.

(g) Mobile phones must be switched to silent during the show. Exhibitors/handlers will be excused from the class if their mobile phone rings during judging and will not be permitted to return to that class. Judges/Stewards are not permitted to take a call during judging of a class. Should a Judge be required to make a call, the Steward is to call for a break. Where the Steward is required to take/make a call, an interim Steward is to be appointed and classes are to continue. Persons taking phone calls are to do so away from the ringside and may be directed to do so to ensure classes are not disrupted.

(h) The Chief Steward shall control the Show Ring and indicate when break(s) are required in accordance with the scheduled classes that will run in the order they are printed.

18.3. PRESENTATION

(a) Presentation of animals will be at the discretion of the Owner however animals must be shown to its best possible visual advantage in order to promote the Miniature Goat breeds as one of beauty, intelligence and of impeccable temperament.

(b) Animals may be presented for showing in well-groomed short coat, cashmere coat, sheltie coat, neatly trimmed or clipped **preferably in accordance with ideal breed type standards**. Hooves must be neatly trimmed and well maintained.

(c) "Cute" presentation is for Fancy Dress and costume classes only. This includes adornment with ribbons and bows.

(d) Halters or collars may be used provided they are neat and tidy and provide adequate control of the animal for which they are being used. The Judge has the authority to require the removal or alteration of any halter/collar/lead which is believed to be unsafe or inhumane.

(e) Glue / Tape / Surgical procedures to change conformation will warrant instant disqualification. This does not include procedures performed for the health¹ and or welfare² of the animal or for identification³ purposes.

(f) Animals must be clean⁴

¹ Taping of folded ears, strapping of contracted tendons

² Disbudding, dehorning, removal of scurs, removal of retained testicle, removal of sprig teats, removal of toggles, desexing.

³ Ear tagging, tattoo, microchip, branding.

⁴ No fecal matter (except under feet), no matted or shedding hair, no parasites, no injuries that are discharging or causing obvious discomfort

18.4. Exhibitors

(a) No Exhibitor, animal or equipment may display any form of identification of an animal or stud name (exception – school uniform is allowed for school students), and no person may verbally identify an animal or its placings/awards/titles prior to or while being adjudicated in the show ring. Judges will not acknowledge such exhibits.

(b) All Exhibitors must conduct themselves in an exemplary manner at all times. Unacceptable conduct or poor sportsmanship will not be tolerated, offenders can be excused from the class and the remainder of show and forfeit any awards received, entry fees, and the right to show in any additional classes at this show and face possible exclusion from future shows, at the discretion of the Judge and Steward on the day. Such issues are to be reported to the Show Manager/MGBA Committee.

(c) All participants are bound by the **MGBA Code of Sportsmanship**. Unsportsmanlike behavior, disrespectful comments regarding a judge, Exhibitor, a placing, an animal, arguments, loud inappropriate comments, sexual harassment, intimidation, belittling comments, bullying, bad language and other such behavior that may bring the MGBA and members into disrepute will be deemed serious in nature. The MGBA promotes a fun, family friendly atmosphere within its organization. Cruelty, abusiveness or poor showmanship by Exhibitors will result in expulsion from further classes.

(d) Exhibitors must present themselves in smart casual attire and must wear closed in shoes. Costume dress is restricted to Fancy Dress classes. All Exhibitors (by their dress and behavior) should be a credit to themselves and to the MGBA Inc.

(e) Exhibitors are not permitted to talk to Judge prior to or during judging, unless spoken to by the Judge. Exhibitors must not chat in the show ring during judging unless directly spoken to by the Judge or Steward. General chatter in the show ring will result in the Exhibitor being excused from the Class. Exhibitors must not converse with the Judge(s) during breaks, and complaints of this nature may lead to Exhibitors being excluded from further classes. Conversations with the Judge regarding exhibits/animals/placement will be at the discretion of the Judge and only after the show is competed.

(f) Judging shall not be delayed for an Exhibitor who is not ready and the Steward of the section shall have the right to exclude and disqualify any Exhibitor competing in that section who does not present on time.

(g) **Zero Tolerance approach**

No-one should be subject to intimidation or made to feel alarmed or distressed or put in fear of reprisal. The MGBA adopts a zero tolerance policy towards all types of bullying, intimidation or harassment activity. The MGBA expects courtesy and co-operation to be shown towards all persons whether members or non-members, exhibitors, spectators or officials at any MGBA event. Any inappropriate behaviour of this type will not be tolerated.

18.5 Animal Welfare

Every animal exhibited at an MGBA show shall, at all times, be treated humanely and with dignity, respect, and compassion. The standard by which conduct or treatment shall be measured is that a reasonable person, informed and experienced in generally accepted livestock exhibition training procedures or veterinary standards, would determine cruel, abusive, or inhumane. Animals must have clean fresh water provided and suitable shelter from the elements. (The Show Manager, Steward or Judge has the final decision on disqualifying individuals who do not observe these standards).

18.6. Judges

(a) A Judge must have a thorough knowledge and understanding of the standard of excellence for goats in general.

(b) A copy of the Show Rules will be sent to Judge/s selected.

(c) A Judge shall not be a Competitor, Exhibitor, Steward or manager at any show at which they are officiating.

(d) A Judge shall not adjudicate over any class in which a family member or any of their animals or the Judges own animals are competing. The onus is on the competitor to withdraw from the class.

(e) Where practical, there should be a minimum of 30 days between judging appointments. When within 30 days it is preferable that a number of different exhibits and or different class sections will be adjudicated.

(f) A Judge shall not visit animals or owners, nor inspect or discuss any animal entered in the show or contest 10 days prior to judging and must not discuss the sale, lease or purchase of any animal with an Exhibitor at the show, prior to or while officiating. All such discussions are to be left until after the completion of Judging.

(g) Teeth, tails and teats – judges not to handle any area that may excrete. In milking classes or does in milk judges are to wash hands between animals.

(h) No Exhibitor shall approach the Judge with regards to a decision or to get further elaboration or advice on their goat unless they obtain permission from the Steward, who may arrange a meeting with the Judge following the conclusion of judging and presentations. The Steward shall remain present during the meeting. Classes must not be disrupted during officiating.

(i) Where events not listed in the RULES are encountered, they will be judged according to the local rules as laid down on the day by the Show Committee. Judges have the authority to make decisions on any point not covered in the rules applying to class procedure, scoring, and conduct affecting a class under their jurisdiction, provided it is in accordance with MGBA rules and regulations.

(j) THE JUDGES DECISION WILL BE FINAL. A Judge's decision, representing his or her individual findings when comparing a particular group of animals against the breed standards and each other, as seen on the day. This is not protestable unless it is alleged to be in violation of the rules or against the breed standards.

(k) Once a class has been judged it shall not be re-judged. All placings will stand: Class placings will stand, if first place is disqualified, then the class will have no first place. Champion and Reserve placings will stand, if Champion is disqualified, then there will be no champion and reserve will remain as reserve and so on.

(l) A Judge may order any person or animal from the competition if they are deemed to be dangerous to fellow Exhibitors, if they are visibly sick or obviously injured. The Judge may order any person from the competition for disruptive behavior not limited to inappropriate, loud, abusive, intimidating, bullying, mischievousness or behavior that Judge considers a health or safety issue. In such a case, awards, points and fees are forfeited. Any resulting loss/es incurred by the person/s allege to have committed such an offence will be their sole responsibility.

(m) Animals with disqualifying faults will be quietly "passed over" and not placed.

18.7. Steward(s)

(a) The Steward(s) may be any capable person, that understands the show rules and is confident working with and directing people. A Steward may choose to nominate assistance when and if required.

(b) Steward(s), time keepers, point scorers and other helpers appointed on the day may have their animals exhibited.

(c) A good Steward makes the work of the Judge much easier by relieving the Judge of details. The Steward informs the Judge of numbers in the incoming class, assembles the class promptly and eliminates long delays. The Steward has the responsibility of checking entries for eligibility, proper attire, equipment and appointments.

(d) The Steward is in charge of the activity in the ring. They should act as a mediator between Judge and the Exhibitors. The Judge should request the Steward to move animals as advised including the removal of animals for safety reasons. The Steward is responsible for preventing Exhibitors crowding the ring and should endeavor at all times to keep the possibility of accidents to a minimum.

(e) The Steward(s) shall be an official member of the show management team working in conjunction with the Judge and Show Manager at the show.

(f) The Steward should collect show cards (if any) after the class and present them to the Judge for him/her to sign.

(g) The Show Manager, Steward(s) or Judge shall have the authority to enforce all rules referring to the show. They may excuse any animal or exhibit from the ring prior to or during the judging, for cruelty or abuse or unsportsman-like behaviour.

(h) The show management has the right to have any person removed from the show grounds, found to be acting in a cruel, abusive or inhumane manner. All entries connected with such, directly or indirectly shall be forfeited and the matter will be reported to the appropriate authorities. The standard by which such conduct or treatment will be measured is that which a reasonable person, informed and experienced in generally accepted animal training and exhibition procedures, would determine to be cruel, abusive, bullying, intimidating, disruptive or inhumane. Further action may be taken by the MGBA Inc. for breach of Members Conduct rules.

(i) The Show Manager is responsible for producing photographs of the Best of Breed and Best in Show animals with show results.

18.8 Agriculture and Local Shows Hosting MGBA Classes

(a) Upon successful application to host an MGBA show, either by the MGBA to the show society or by the show society to the MGBA, the MGBA will furnish the hosting show with MGBA show rules, Breed standards, height requirements and a **recommended** class program.

(b) The hosting show society has its own management and is run to suit the locality in which it is held. The show rules and regulations listed in the show schedule for each show will apply to all MGBA shows.

(c) For championship points to be accepted by the MGBA, MGBA rules and regulations must apply.

(d) The State Show Secretary will apply to the MGBA Committee in writing for approval of any new MGBA points shows. Once approval has been granted by the Committee, that show is on-going for the following year/s.

(e) MGBA royal show entry subsidy 40% of total Royal Show entry fees over \$4.00 per entry can be subsidized with refund capped at \$100.00 per registered MGBA stud and can be applied to State Royal Shows only. Gate, parking and any other fees incurred on the day are not to be included. Subsidy is for goat entry fees only.

(f) MGBA Royal Show entry fee Subsidy is offered as a refund to studs who make the claim for it within 14 days after the show has been held. Breeders must supply the State Show Manager with bank details to be eligible for refund. Refunds will not be given;

- on the day;
- after the 14 day refund eligibility period ceases;
- to forfeited entries or to disqualified exhibitors.

(g) Studs who claim the subsidy must have had their animals on show at the show until the time specified by the Royal Show Society or after approval to leave by the Steward on the day.

18.9. Ring Procedure

(a) To be eligible to compete Exhibitors must follow the directions of the Judge and Steward while in or around the ring and be ready to enter their class on time.

(b) Exhibitors must communicate to the Judge through the Steward. Exhibitors must ensure they do not allow the animal to be identified by name, stud, breeding, placings, awards, titles, owner, seller – prior to, or while being adjudicated.

(c) Animals to be shown in-hand at a walk. To be judged 70% on breed type, conformation, quality and substance; 30% on manner of walking, disposition and general manners.

(d) All animals must be in the control of a competent handler at all times. Animals should behave quietly and show good manners in and out of the show ring. Unruly animals will be excused from the ring.

(e) Junior handlers must be supervised by a competent adult handler/owner at all times.

(f) No Exhibitor may withdraw or remove an animal from a class after it has commenced, or remove them from the show ring, before the class is over and the Judges' comments have concluded, without the permission of the Steward.

(g) If an Exhibitor voluntarily removes an animal from the ring without the permission of the Steward, the Exhibitor will be disqualified and all their entries from all future classes at that show and all prizes and entry fees for the entire show will be forfeited.

(h) In the case of accidents, the above rule will not apply.

(i) Animals are NOT to be left unattended at the ring side.

(j) Animals, Exhibitors and handlers are to conduct themselves in an exemplary manor at all times. Unruly animals, cruel, abusive, or disruptive Exhibitors/handlers will be excused from the ring and will be prevented from competing in further classes. All entry fees and other such costs will be forfeited and offenders may be banned from future shows.

18.10 Events Information

(a) Ring work outs, Show programs, Classes etc will be set and implemented as required for each individual show.

(b) All animals will be judged according to the MGBA Breed Standard of Excellence scorecard and faulting sheet.

(c) **Breed division:** Animals can only be shown as one breed at any one show and may only exhibit in the breed listed on registration certificate. Pygmy/Nigerian Dwarf derivatives must have their percentage clearly listed on all documents including results and must be DNA parent verified as per MGBA requirements.

(d) **Gender division:** Classes will be divided by sex into three groups (Does, Bucks and Wethers) all sexes to be judged equally.

(e) **Age division:** Bucks/Wethers/Does will be shown as Kids up to 12 months, Juniors 12-24 months, Seniors 24-48 months and Veterans over 4yrs of age. The age of the animal will be determined from date of birth.

(f) Ribbons to 3rd place will be awarded unless otherwise stated.

(g) Minimum two classes to be offered per each age division to be eligible for Champion Award.

(h) Show Classes for each Breed – shall be in accordance with MGBA Rules including the MGBA show schedule.

(i) For a show to be counted as a Champion Point Show (see Rule 19), all age groups and all sex divisions in a breed must be included. Classes may be broken into defined age groups as long as all eligible animals / groups / divisions are included - Kid, Junior, Senior (& Veteran where applicable) - Doe, Wether, Buck.

(j) For any show to be a Champion points show, photos of Best of Breed and Best in Show (and any additional photographs listed in schedule or notified) must be submitted with show results.

(k) MGBA committee approval and MGBA rules apply.

18.11 Awards

(a) **Champion Award.** On completion of judging of all age group classes in the section (eg- kid doe section) the first place winners from that age division classes will return to the ring. The Judge will select the champion animal from the line of first place winners. Animals are judged on conformation and presentation, awards are not automatic, exhibits must meet minimum standards to achieve these prestigious awards.

(b) **Reserve Champion Award.** The Steward will then call the second place animal in the class from which the Champion had been selected & place it in the line-up with the remaining first place winner/s, to be judged equally for the title of Reserve Champion.

The champion animal must be moved forward of the class and held in show stance while the Judge is selecting the Reserve Champion in the remaining line up.

(c) **Best of Breed.** Following the judging of Champion and Reserve for each gender/age group, the Champion Kid, Junior, Senior and Veteran for Wether classes are presented to the Judge. One animal is selected as Best of Breed Wether. Then the Champion Kid, Junior, Senior and Veteran for Doe and Buck classes are presented and one animal is named Best of Breed. Foundation class winners are not eligible.

(d) **Best in Show.** When a minimum of two MGBA breeds have competed at a show, and a line-up of at least

two Best of Breed exhibits are present, then this prestigious award can be bestowed upon the animal that the Judge deems to be the very best animal on the day. Each eligible Best of Breed winner will compete. Wethers compete for Best Wether in Show. Does/Bucks compete for Best in Show.

(e) Most Successful Exhibitor (Automatic entry) POINT calculation

- The Exhibitor of the first placed animal in confirmation and presentation related Auxiliary class earns one point (eg best presented, showmanship, udder, head and progeny classes).
- The Exhibitor of the Best Udder in Show receives 1 additional point for each other animal in the Best Udder line up (maximum 2 additional points where both other udder classes have a 1st place)
- The Exhibitor of each breed/age/gender Champion earns the number of points equal to the number of animals in that class, and the Exhibitor of each Reserve Champion gets 1 less point than Champion Exhibitor. For example, if there are 8 goats in the classes making up Pygmy Kid Doe, the Exhibitor of the Champion Pygmy Kid Doe earns 8 points and the Reserve Champion Exhibitor earns 7 points.
- The Exhibitor of each Best of Breed Wether earns 1 point for every other wether in that breed excluding their own age class.
- The Exhibitor of each Best Of Breed earns 1 point for every other doe/buck in that breed excluding their own age class.
- The Exhibitor of the animal named Best In Show earns 5 points.
- The Exhibitor with the highest number of points at the end of the day will be named 'Most Successful Exhibitor'.

(f) Most Successful Breeder (Automatic entry) POINT calculation (29/3/18)

- The Breeder of the first placed animal in confirmation related Auxiliary class earns one point (eg udder, head and progeny classes). – The Breeder of the Best Udder in Show receives 1 additional point for each other animal in the Best Udder line up (maximum 2 additional points where both other udder classes have a 1st place)
- The Breeder of each breed/age/gender Champion earns the number of points equal to the number of animals in that class, and the Breeder of each Reserve Champion gets 1 less point than Champion Breeder. For example, if there are 4 goats in the classes making up Aust Mini Junior Buck, the Breeder of the Champion Aust Mini Junior Buck earns 4 points and the Reserve Champion Breeder earns 3 points.
- The Breeder of each Best of Breed Wether earns 1 point for every other wether in that breed excluding their own age class.
- The Breeder of each Best Of Breed animal earns 1 point for every other doe/buck in that breed excluding their own age class.
- The Breeder of the animal named Best In Show earns 5 points.
- The Breeder with the highest number of points at the end of the day will be named 'Most Successful Breeder'.

18.12 Other Optional Classes

1st, 2nd, & 3rd Place ribbons only.

- (a) **Best Presented** – open to all animals of any breed or age. Judged on cleanliness of exhibit, clean ears, nostrils, eyes, under tail, feet, teeth, coat, coat well groomed, no loose hair, matching collar & lead, feet trimmed evenly, etc.
- (b) **Udder Classes** – open to does of any breed up to 60cm. Judged on depth, width, balance, attachment, blending and size of udder following through to the size, shape and position of teats, in relation to her age, size and breed.
- (c) **Head classes** – separate head class offered for each breed. Open to all animals of any age of that breed. Judged on balance, symmetry and breed type with preference given to animals exhibiting good width, appropriate length for breed type, with bright eyes set well apart, blending smoothly into a symmetrically aligned, relatively wide muzzle, with even bite, broad lips and large open nostrils. All ears regardless of type should be evenly placed on the head and of even size and shape. Polled, dehorned or neatly disbudded.
- (d) **Breeders Group**, two or three animals bred by the same breeder (same stud name), from the same owner. They shall be judged with emphasis placed upon likeness, quality, conformation, and uniformity of breed characteristics. More than one set of entries per sire or dam may be entered in the same class. Entries must be from the same Exhibitor.
- (e) **Sire OR Dam and one progeny**, To be judged on quality, conformation and uniformity of type .
- (f) **Progeny** must be better than or equal to sire/dam. Entries must be from the same Exhibitor.
- (g) Any other classes may be offered by the MGBA, Show Manager, Committee, Host Show
- (h) The Show Manager will be responsible for preparing the show schedule and class list. Classes must incorporate the minimum number of classes required for the show to be eligible for Champion Point collection. Classes will be offered or omitted in accordance with exhibitor support for such and the Show Manager will be mindful that ribbons are supplied for classes that have no or minimal entries at a cost to the supplier.

18.13 Showmanship (Junior/Senior Handler Classes)

The purpose of showmanship is to develop leadership, initiative, and responsibility. To develop self-confidence and patience. To learn show procedures, rules, and etiquette as a handler and develop high standards of sportsmanship when dealing with judges, competitors, and the public. Showmanship is about the positive experience of goat ownership and of presenting the animal in the show ring and learning how to win and how to lose gracefully. Showmanship is concerned with how well the animal is shown by the handler. **This is not a question/ answer class.** The emphasis is on the handler's presentation of the animal standing still and in motion. The handler must convey knowledge and understanding of the goat's breed. The handler should present the goat according to the breed

standard. The handler and goat must appear to be part of a team. They must work well together, move fluidly, and give an overall picture of being one unit.

Showmanship is designed to judge the *Exhibitor's* ability.

(a) Appearance of the goat 30 points

- Grooming – clean, tidy, neatly trimmed and presented
- Tack – for maximum points collars should match leads, tack can be coloured to correspond with exhibitor attire.
- No "Fancy Dress Costumes".

(b) Appearance of Exhibitor 10 points

- A "professional" look is always the best.
- All clothing, including hat and boots, should be clean and well-fitted.
- Neat and tidy.
- Colour co-ordination with the animal is acceptable.

(c) Attitude 10 points

- Professional, respectful and mindful of the Judge
- Confidence is a must. The more confidence you show, the more the Judge will remember you.
- Show naturally with a pleasant smile.
- Be confident and enjoy the class as you are presenting the work you have previously accomplished. HAVE FUN!
- Never let the Judge out of your sight. Keep your eyes on the Judge and on your animal and on others in the ring.
- Be aware of where the Judge is and where you need to be.

(d) Handling Ability 50 points

- Carry your lead neatly folded in your hand.
- Keep your lead short.
- Walk with the goat between yourself and the judge at all times when safe to do so.
- Do not step over your goat.
- If your animal misbehaves, stop, wait for it to settle, correct it gently and continue on.
- Try to keep parallel to your animal.
- Make sure you and your goat are always straight.
- When lining up, stay a goat length away from the person beside you or in front of you.
- Do not let your animal touch another animal keep a suitable distance between yourself and others
- Do not let your animal pick at grass/things on the ground
- Line up as directed by the Judge,
- Be quick when standing your animal up.
- Do not talk in the ring unless spoken to by the Judge or Steward.
- Do not stand between the Judge and your goat, change sides.
- Face the Judge at all times when lined up.
- Listen to the Judge's reasons for the placing's, learn from those.
- Leave the ring with pride and confidence.
- If you tried, and did your very best, you are a winner!

Recommended Classes

Pee Wee Showmanship Class up to 6yrs old.

Junior: 7yrs-10yrs

Intermediate: 11yrs-14yrs

Senior: 15yrs-18yrs

Open: over 18yrs

18.14 Trail

18.15. Show Jumping

18.16. Show Protests, Rule Breaches and Penalties

(a) All protests/problems/disputes must be quietly discussed with Steward without disrupting the Judge or the class(es).

-Exhibitors/Members and their associates must maintain professionalism, communicate quietly and respectfully and avoid disruption of the show.

-Communication may be done before, between or after a class has been completed. The Steward or Judge must not be approached during the officiating of a class unless it relates to an immediate safety concern.

-The Steward may call a 'break' between classes if the Steward feels it is necessary and if the problem relates directly to the class in progress and the Steward thinks they can rectify it without disrupting the class.

-The Steward may call any person(s) to assist with resolving the question/problem including the Judge and the decision made by the Steward/ Judge/Show Manager at that time, will be final.

-Ribbons/awards once placed will not be removed to re-judge class(es).

(b) The MGBA recognises the position, rulings and directives of the Royal Agricultural Society in all matters relating to Society Shows and will follow their guidelines in situations where no rule has been provided for in these rules.

(c) Any objection, complaint, dispute or protest shall be documented and forwarded to the MGBA Secretary preferably within seven days such occurring.

(d) All issues will be dealt with in accordance with the current MGBA rules.

(e) The penalty for infringement of Rules may be elimination of the Exhibitor from the event at the discretion of the Show Officials.

(f) In the case of disqualification, no points will be scored, all entry fees will be forfeited and owner/exhibitor will assume all responsibility for any/all loss(es) incurred.

19: Permanent Awards

19.1. Australian Champion Award

(a) Only current financial MGBA members may submit an application to the Committee for Australian Champion Status to be awarded to an eligible MGBA registered animal. Adults may apply for Australian Champion and Australian Grand Champion status with points collected from approved MGBA shows.

(b) Only AMGR/MGBA Registered animals may apply for Australian Champion and Australian Grand Champion status with points collected from approved MGBA shows. Animals may apply once 3yr height verified and within show height.

Import percentage must be listed as part of the permanent Champion title. Nigerian Dwarf and Pygmy must be DNA parent verified (Doe/Wether/Buck).

(c) **Australian Champion Title:** An animal must accrue a minimum of 100 points under at least 3 different judges including at least one Best of Breed title. A total of 20 championship points may be gained at any one show or 25 points from any one show where the animal has won Best In Show (BIS) or equivalent. Animals may also obtain up to a total of 20 points from progeny throughout the goats show career.

(d) **Australian Foundation Champion Title:** An animal must accrue a minimum of 100 points under at least 3 different judges. A total of 20 championship points may be gained at any one show, or 25 points from any one show where the animal has won BIS. Show points will only be considered when obtained in the below Classes.

(e) Animals reaching AUSTRALIAN CHAMPION STATUS will be awarded the title of "Champion" and will have the letters "**Aust Ch**" permanently added to their name. The Championship title is a life time award and will not be removed from an animal unless in compliance with the rules and regulations herein.

(f) Animals reaching Australian FOUNDATION CHAMPION STATUS will be awarded the title of Foundation Champion and will have 'Foundation Ch' permanently added to their name. This title is a life-time award and will not be removed from an animal unless in compliance with the rules and regulations herein.

(f) Show points will only be considered when obtained in ages classes for the breed. A maximum of 50 points from Kid/Junior Classes may be accrued, the balance being obtained as an eligible senior.

(g) Champion points can be collected at any age.

(h) It is the responsibility of the owner to collect & maintain records of points gained at each show to supply when registering such. There is no time limit for acquiring points & they are transferred with animal upon sale.

(i) Animals must be height verified at the time of applying for Australian Champion status.

(j) Points can only be accumulated at approved shows using approved Judges.

i. Royal shows will be counted as double point shows.

ii. States that have no Royal shows available may organise an in house show, or appoint one state show at the beginning of the year as a branch show and obtain double points.

iii. Where a double Judge Show is undertaken, a Judge is independent of another and each Judge is accepted as judging their own show, regardless of the events being held at a single venue.

Only 20 points (total) may be gained under each judge at such a show (3/5/2014) **or 25 points for the animal achieving Best in Show.**

MGBA POINT SYSTEM

Champion Kid doe: 5 points plus 1pt for your animal and then 1 point for every other doe

Champion Kid buck: 5 points plus 1pt for your animal and then 1 point for every other buck

Champion Kid wether: 5 points plus 1pt for your animal and then 1 point for every other wether

Champion Junior doe: 5 points plus 1pt for your animal and then 1 point for every other doe

Champion Junior buck: 5 points plus 1pt for your animal and then 1 point for every other buck

Champion Junior wether: 5 points plus 1pt for your animal and then 1 point for every other wether

Champion Senior doe: 5 points plus 1pt for your animal and then 1 point for every other doe

Champion Senior buck: 5 points plus 1pt for your animal and then 1 point for every other buck

Champion Senior wether: 5 points plus 1pt for your animal and then 1 point for every other wether

Champion Veteran doe: 5 points plus 1pt for your animal and then 1 point for every other doe

Champion Veteran buck: 5 points plus 1pt for your animal and then 1 point for every other buck

Champion Veteran wether: 5 points plus 1pt for your animal and then 1 point for every other wether

Champion Foundation senior: 5 points plus 1pt for your animal and then 1 point for every other Foundation animal

Best of Breed: 1 point for every other Doe and Buck in the same breed (excluding the points already won Winner's Class) (Note: excludes wethers and foundation animals).

Best of Breed Wether is 1 point for every other wether in the same breed (excluding the points already won in their own class. Excludes foundation animals.)

Best In Show (Each BOB doe/buck compete): 5 points plus 1 point for every other Doe and Buck in the show (excluding points already won in Winner's Class and Winner's BOB).

Best Wether in Show (Each BOB Wether compete): 5 points plus 1 point for every other wether in the show (excluding points already won in the Winner's Class and Winner's BOB)

**** Maximum of 20 points can be accumulated at one show for animals who do not win Best in Show**

**** Maximum 25 points can be accumulated from a show where the animal wins Best in Show**

PROGENY POINTS - animals may also obtain up to a total of 20 points towards their Australian Championship Title and 100 points towards their Grand Championship Title from progeny throughout the goats show career. Progeny points are not capped at any show.

3 points for the sire and dam of progeny that are awarded Champion (of sex)

5 points for the sire and dam of progeny that are awarded Best of Breed (or equivalent)

7 points for the sire and dam of progeny that are awarded Best In Show (or equivalent) (of all breeds shows ONLY)

20 points for the sire and dam of progeny that are titled Australian Champion

19.2 Australian Grand Champion Award

(a) **Australian Grand Champion Title:** An animal must accrue a minimum of 400 points under at least 5 different judges using the Point System for Australian Champion Award (19.1). The animal must be awarded at least one Best In Show or at least three Best Of Breed (or equivalent). A total of 20 championship points may be gained at any one show or 25 championship points from a show where the animal has one BIS or equivalent.

Animals may also obtain up to a total of 100 points from progeny.

(b) AUSTRALIAN GRAND CHAMPION STATUS will be awarded and the letter “**G**” will be permanently added to the “**CH**” before the animal’s name.

(c) Animals must be height verified at time of applying for Grand Champion Status. Overheight animals are not eligible.

20. Judges Training Portfolio

Training will be based on miniature goat show rules and programs must be approved by the MGBA Committee to be recognized. The MGBA will provide and/or approve guidelines, lecture format, suggested content, exam format, minimum requirements for practical exam, competency criteria, certificates, techniques and material as needed. These regulations are binding and no training program will be acknowledged unless approved by the MGBA.

- Applicants must be financial MGBA members. All outstanding membership fees must be paid before the Steward/Cadet appointments will be counted towards training.

- All applicants at all levels are required to sign and abide by the following;

MGBA PROHIBITED PERSON DECLARATION

MGBA and its affiliates have a duty of care to their members and to the general public who interact with MGBA Officials.

Members wishing to be registered as a Judge or Official are required to complete the following declaration;

I Sincerely declare:

1. To my knowledge there is no matter that the MGBA may consider constitutes a risk to its members, employees, volunteers, exhibitors or reputation by accepting my MGBA Judge/Officials registration. Should such an issue arise, I will notify the Secretary immediately and withdraw my registration.

2. I acknowledge that I have read and agree to abide by the MGBA Code of Conduct for Judges and Officials. I acknowledge I will be subject to disciplinary action if I breach the code.

3. In making this application, I agree to my name, address, phone number, email, Judge training, qualifications, results, matters related to such and any other relevant information being collected, stored and distributed as required.

JUDGE ETHICS

As a representative of an association a Judge will maintain a high standard of ethical and professional conduct comprised of honesty, integrity and fair dealing; will evaluate and adjudicate objectively and impartially in accordance with the rules and breed standards; will inspire confidence in their abilities through appearance, evaluations, presentations and interactions; shall inspire others through encouragement and education and; shall strive to continue personal development of judging skills throughout their judging career.

ETHICS

1. A judge should reply promptly to an invitation to judge at a show and, having made the commitment, honour it. If a judge is, at short notice, unable to officiate, he/she should inform the show secretary immediately.

2. Because judges are representing themselves, the Association and the particular Show Society, they should always be punctual and look their best, being correctly and neatly dressed. Both ladies and gentlemen should wear suitable footwear. Track pants, Tee shirts, sandals or thongs are not considered suitable standards of dress.

3. A judge’s conduct and behaviour should be beyond reproach and a judge must exhibit propriety and integrity when judging events, and be unbiased and fair. They must at all times be polite and act in a respectful manner to competitors, spectators and show officials.

4. While conducting a ring, the safety of the competitors, spectators, stewards, animals must be the judge’s first consideration.

5. A judge must not accept hospitality from an exhibitor immediately before or during a show and must not visit any owner or exhibitor or inspect or discuss any exhibit entered in the show except in the ring until judging at the show has been completed.

6. Should an exhibitor offer information to the Judge that may be regarded as designed to influence the Judge, the Judge shall excuse the exhibitor and their exhibit from competition and report the incident in accordance with

7. A judge must not refer to a show catalogue or steward’s list either before or during judging, nor can a judge be in possession of a show catalogue whilst in the ring.

8. A judge should not discuss any exhibitor’s animal’s faults with stewards or other competitors outside of the class being judged unless it is for educational purposes.

9. Where a judge is aware the judging of an exhibit is an infringement of any rule, then the judge must refrain from judging that exhibit and draw the attention of the steward to the issue.

10. A judge may withhold an award if, in their opinion, no animal is worthy of the award.

11. A judge has the discretion to agree or to refuse to discuss their opinion of an exhibit with an exhibitor.

12. A judge should ensure that a steward or other show official is present during any discussion with an exhibitor and should give their opinion courteously and sincerely while refraining from engaging in debate.

13. A judge may lodge a written complaint concerning the behaviour, demeanour, dress, condition and the like (in respect of the exhibitor or exhibit) to the secretary/committee but should inform the secretary/committee of the impending complaint before leaving the show and submit the written complaint within 7 days.

20.1. Chief Steward - Training and Assessment

- The Stewards course is mandatory and pre-requisite for Judges course and a number of stewarding appointments should be recorded. (11/4/2011)

All Steward candidates will participate in the following process to qualify for certification and meet prerequisite requirements for Judge training;

i) attend pre-examination training, which will be for a minimum of 4 hours,

ii) complete an orientation task related to show rules prior to other examinations for the purpose of assessment.

Tasks to demonstrate understanding of steward tasks could be audio tapes, photo collection, posters, interviews etc,

iii) Dress and presentation to be a standard expected of a show official,

iv) Competencies in communication skills, health and safety basics, book work, photography, sign-in requirements, time management, ring procedures and other steward tasks at a standard expected of a Steward,

v) undertake a practical test including sign in and ring procedures and meet pre-determined criteria indicating level of competence.

iii) undertake a written test based on the course content with a minimum pass of 80%

Successful Candidates will complete Steward Application form and submit it together with task proficiency reports signed by the Trainer(s) and other relevant documentation as required, a recent passport size photograph and correct fees upon completion of Steward Training test.

20.2. Judge Cadet - Training and Assessment (Level One)

Judge candidates will participate in the following process to qualify as Level One Cadets;

i) attend pre-examination training, which will be for a minimum of 20 hours,

ii) complete an orientation task related to breed standards prior to other examinations for the purpose of assessment.

Tasks to demonstrate understanding of breed standards could be recordings, photo collection, posters, interviews etc,

iii) Dress and presentation to be a standard expected of a Judge,

iv) make oral comments, use a microphone (optional) and give justifications for placing in practical assessment at a standard expected of a Judge,

v) undertake a practical test including the judging of bucks, does, kids and group classes with a minimum pass level of 80% overall and 75% for any one class, and meet pre-determined criteria indicating level of competence.

iii) undertake a written test based on the breed standards and lectures with a minimum pass of 80% and meet pre-determined criteria indicating level of competence,

iv) participate (pre or post training) in a minimum of four shows as Ring Steward

First practical underjudge appointment to be undertaken within 6mths of successful completion of above criteria.

Successful Candidates will complete Level One (Cadet) Application form and submit it together with task proficiency reports signed by the Judge Trainer(s) and other relevant documentation as required, a recent passport size photograph and correct fees upon completion of Judge Training test.

20.3. Judge Limited - Training and Assessment (Level Two)

Judge Cadets will participate in the following process to qualify as Level Two Judges;

i) reached 18 years of age;

ii) gained satisfactory reports from all Over-Judges when the applicant was a cadet.

iii) judged a minimum of three shows, preferably within home State under guidance of a Level 3 or 4 over-Judge (option of extra shows as a Level 1 for a cadet Judge wishing to gain more experience and confidence or cadet under 18yrs of age; It also allows for cadets to have another Judge's perspective and see different judging styles).

Recognised shows schedule classes for all age groups to qualify as approved MGBA show.

Underjudge appointments should be attended at no more than 6mthly intervals.

iv) Level 2 Judge may apply to be listed on the Judge's Register.

v) attended refresher program within required time frame;

Successful Candidates will complete Level Two (Limited) Application form and submit it together with task proficiency reports signed by the Judge Trainer(s) and other relevant documentation as required, a recent passport size photograph and correct fees upon completion of Judge Training requirements.

- Cadets shall be subject to the same rules as for Judges excluding rule 18.6 (c).

- Cadets may have their animals exhibited on the day provided they are prepared and exhibited by other people.

- One cadet per show, minimum 20 classes to be judged to count as one show.

- Cadets are required to judge their own animals at least once.

- Shadow Cadet – shall follow the Judge and shall check over each animal, behind the Judge remaining silent during the whole process. After the Judge has placed the animals and the class is dismissed, the Cadet and Judge may

discuss points, issue etc. The Shadow Cadet shall not adjudicate the class and will not discuss with the Judge during the class. The Judge may point out an issue and may be more thorough or descriptive with conformation and animal placings for the benefit of the cadet, without holding up each class.

- Issuing of MGBA Judge Qualifications is via the MGBA committee only. (20/7/2011)

20.4. Judge Open - Training and Assessment (Level Three)

Level Two Limited Judges will participate in the following process to qualify as Level Three Open Judges;

- i) Successfully judged four shows unassisted, preferably within the home State as a Level 2 Judge, with no more than 12mths between each judging appointment.
- ii) attended Judge refresher program within required time frame, where required;
- iii) made application with proof of judging appointment to committee for placement as a Level 3 Judge,
- iv) Level Three (Open) Judge has the right to judge Royal and Branch Shows
- v) Level three Judge is qualified to over-judge with cadet Judges after the refresher course has been attended, to ensure competency level is still high & to ensure Judge is up-to-date on current rules, regulations & breed standards. Successful Candidates will complete Level Three (Open) Application form and submit it together with other relevant documentation as required, a recent passport size photograph and correct fees upon completion of Judge Application requirements.

20.5. Judge Australian Panel - Training and Assessment (Level Four)

Level Three Open Judges will participate in the following process to qualify as Level Four Australian Panel Judges;

The Member must have held continuous active membership with MGBA / AMGR for a minimum 5yrs and;

LEVEL 4 (Australian Panel) is appointed to judges who have attained 100 points accrued in accordance with the following;

- i) one point for each year of membership (max 10pts);
- ii) one point for each show attended as a ring/chief steward (max 20pts);
- iii) two points for each year served as active Judge (must judge in that year), minimum Level Two Judge (max 20pts);
- iv) one point for every show judged as Level Three Judge with no more than 12mths between each judging appointment;
- v) additional one point for every 30 entries;
- vi) additional two points for each show outside home state;
- vii) ten points for each full show year^[1] as show co-coordinator or manager (max 20pts);
- viii) additional one point for every 50km travelled, calculated as return trip by any means (max 5pts/show, 30pts total)
- ix) five points for each over judging with cadet
- x) full details of all entries are to be kept by the applicant and will be verified by the MGBA for point tally.
- xi) Judge must remain up to date with current breed standards and show policies and procedures and
- xii) attend refresher program within required time frame;

Successful Candidates will complete Level Four (Australian Panel) Application form and submit it together with other relevant documentation as required by committee, a recent passport size photograph and correct fees upon completion of Judge Application requirements.

Once qualified the Level 4 Judge may oversee judge training courses.

20.6. Maintaining Accreditation ... is your responsibility

MGBA Judge Accreditation

To maintain MGBA accreditation a Judge is required to;

- Remain a financial member of the Miniature Goat Breeders Association of Australia Inc;
- Judges will be automatically taken off the Judge register when membership expires (annually). Only MGBA Judges holding current membership will be eligible for appointment.
- Adhere to MGBA show rules, standards and guidelines;
- Adhere to MGBA Code of Conduct for Officials;
- Adjudicate at least once in a 12mth period.
- Attend MGBA Judge Refresher (reaccreditation) programs within five years covering many relevant topics such as ring procedures, risk management, communication, role of officials etc.
- Submit MGBA Judge Reaccreditation form to the Committee as required.
- Lapsed Accreditation - No more than 12mths should lapse between each judging appointment for MGBA Judge license to remain current. If no judging appointment is attended within 24mths the Judge's name will be removed from the MGBA Judge list.
- MGBA Approved Judges from other Societies (Dairy, Angora, Boer etc) are required to adhere to their own Society Rules and regulations for maintaining their own Societies Judge Licenses.

^[1] **Full show year;** organise and book shows for the year, book Judges/stewards, organise photographer for each show, organise trophies, prepare schedules and have them uploaded to website for show year, collect and prepare entries/sign in sheet/catalogues for each show, compile results with suitable photos for upload, prepare and report budget to committee. Preparation of all shows for the year, may delegate jobs as required.

- to reinstate Judge Accreditation a Judge is required to participate in the next available reaccreditation or judge refresher program as required and current MGBA membership must be held before the Judge can apply for reinstatement.

- Additional training will be required where more than 36mths without adjudication has occurred.

20.7. Complaints / Feedback regarding Accredited MGBA Judges

The MGBA Judge / Official is at the forefront of the association and their impeccable professional behaviour is of the utmost importance in promoting the high standing of the association as a whole. Complaints / Feedback should be forwarded to the committee where they will be processed in accordance with MGBA rules.

21: MGBA Fun Days & MGBA Animal Clinics

21.1. General

- (a) Requirements for eligibility of animal(s) to participate will be listed on advertising material.
- (b) Attendance will be by invitation only and will be indicated on the event advertisement.
- (c) MGBA rules will apply and will be used in conjunction with event requirements.

22: Waiver & Indemnity

As an express condition of participation at an MGBA event, each participant their families and associates, understands and agrees that the MGBA and its representatives, shall not be held liable for any damage or loss, injury or death of any participant, animal, or for damage done to the facility or property and each participant voluntarily participates at their own risk and assumes sole responsibility for their own actions and any damage or loss, injury or death that may arise from such participation and waive any right of legal action against the MGBA, its officials and affiliates for all claims arising from or in connection with these activities.

(Rules current as of November 2018)

Published by

The Australian Miniature Goat Registry

First Published (Handout) April 2000

Re-printed (with modifications) February 2002

Re-printed (with modifications) January 2006

Re-printed (with modifications) January 2008

Re-printed (with modifications) March 2010

Reprinted (with modifications) June 2010

Reprinted (clarification only) August 2012

Re-printed (updated) July 2013

Re-printed (with modifications) November 2018

© Information, Design, Illustrations, Photographs, S. Ludwig 2000-2018, MGBA 2007-2018

All Rights Reserved.

Information contained herein is based on technical detail and management practices used by established Australian Miniature Goat Breeders and

overseas goat organizations recognised by the Australian Miniature Goat Registry and MGBA. **MGBA Code of**

Sportsmanship

Shared values of those involved in our sport of miniature goat showing include principles of sportsmanship. The MGBA believe that the principles of sportsmanship is an important part of our sport that will see it thrive for years to come. With the belief that it is useful to periodically articulate the fundamentals of our sport, this code has been prepared to form the MGBA Code of Sportsmanship.

- Exhibitors respect the history, foundation and integrity of the Australian Miniature Goat breed.
- Members agree to maintain a high standard of ethical conduct comprised of honesty, integrity and fair dealing essential to the success of the association and its members.
- Members shall not engage in hostility, derogatory/degrading/defamatory behaviour towards other Members/ Breeders/ Exhibitors/ Judges/ Stewards/ Purchasers, their friends/ family or animals.
- Exhibitors commit themselves to values of fair play, courtesy, and competition, as well as winning and losing with grace.
- The Exhibitor refuses to compromise the impartiality of a judge.
- The Exhibitor respects and adheres to the MGBA show rules; the show society rules in their State as well as those of the hosting show society governing the miniature goat show/s.
- Exhibitors always consider as paramount the welfare of their goats/s.
- Any person believing a member may be in breach of a code may submit their concern to committee on the "Complaints Form" found on the MGBA website menu bar. The matter will be reviewed forthwith.
- Upon a complaint being substantiated penalty shall include but not be limited to: ineligibility to hold a committee/state representative position; ineligibility to process applications with the registry; ineligibility to participate in events/ shows/ functions; removal of champion points if breach has occurred at a show or regarding a show attended; and possible suspension and/or cancellation of membership.